

MONTHLY MEMBERSHIP PROGRESS REPORT

LOCATION NEPAL

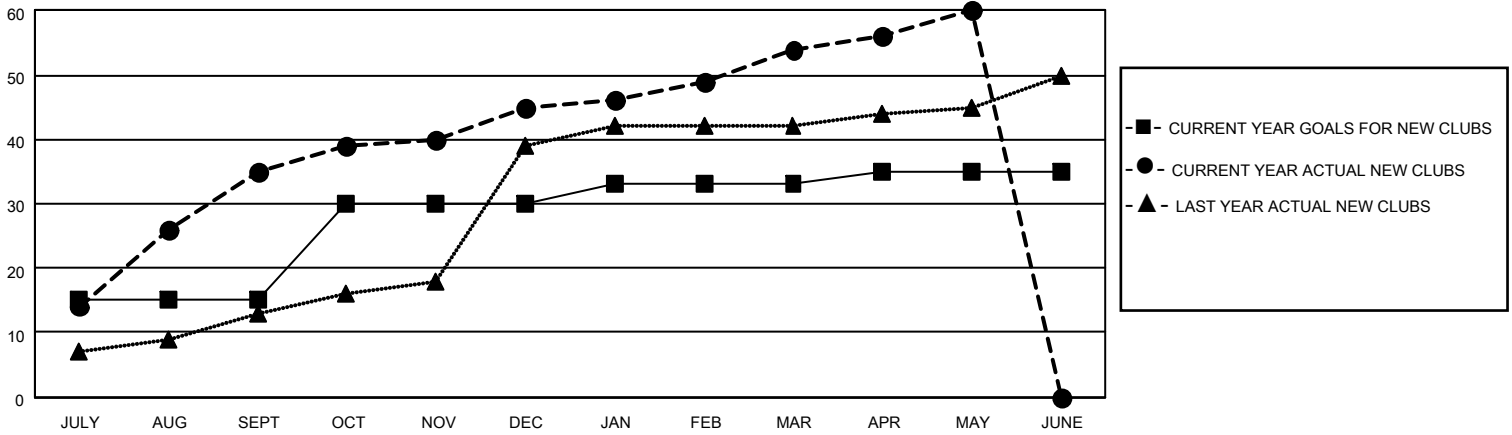
District 325A2

Results as of: 5/31/2022

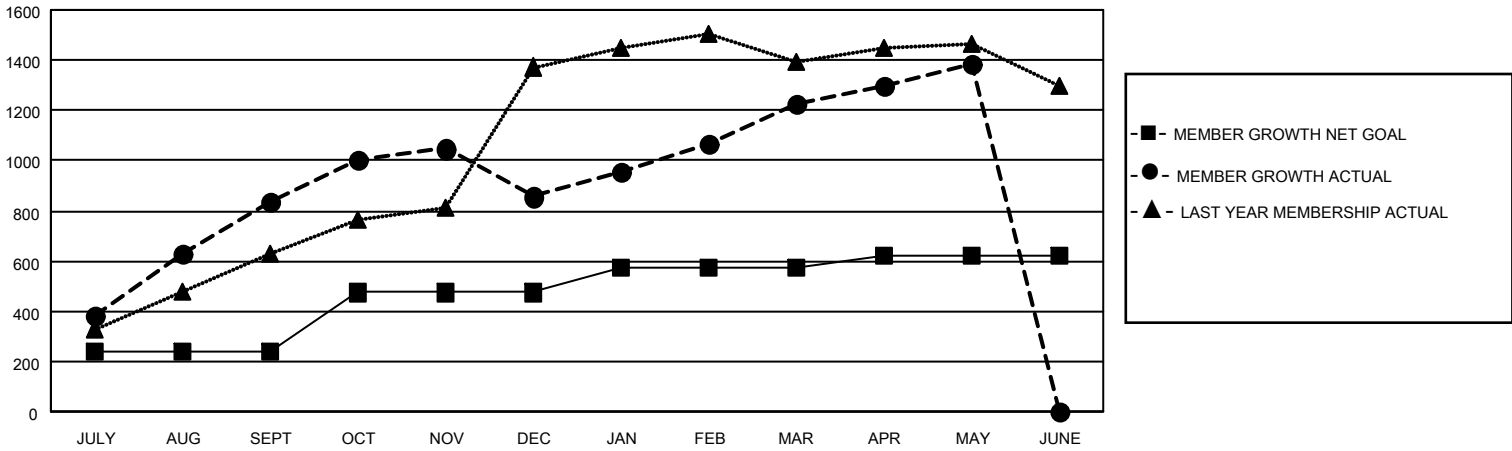
Clubs			
RESULTS FOR 2021-2022			
QUARTER	NEW CLUB GOAL	NEW CLUBS	DROPPED CLUBS
JULY/AUG/SEPT	15	35	6
OCT/NOV/DEC	15	10	4
JAN/FEB/MAR	3	9	2
APR/MAY/JUNE	2	6	0

Members			
RESULTS FOR 2021-2022			
QUARTER	MEMBER GROWTH NET GOAL	MEMBER GROWTH ACTUAL	DROPPED MEMBERS ACTUAL (including transfers)
JULY/AUG/SEPT	237	1183	324
OCT/NOV/DEC	237	496	447
JAN/FEB/MAR	100	453	74
APR/MAY/JUNE	50	282	117

GOALS AND ACTUAL NEW CLUBS CUMULATIVE



GOALS AND ACTUAL MEMBERS CUMULATIVE



DROPPED CLUBS: 12

180 CLUBS OF 297 ADDED 1 OR MORE NEW MEMBERS

GENDER DISTRIBUTION

DROPPED MEMBERS

DECEASED	6
CLUB CANCELLED	207
OTHER	749
TOTAL	962

MALE	5,126 (68.45%)
FEMALE	2,358 (31.49%)
NON BINARY	0 (0.00%)
PREFER NOT TO ANSWER	5 (0.07%)

[CLICK HERE FOR CUMULATIVE MEMBERSHIP DATA](#)

TOTAL FAMILY UNIT MEMBERS	5,449
FAMILY MEMBERS PAYING HALF DUES	3,634